

ЗНАКОСИНТЕЗИРУЮЩИЕ МАТРИЦЫ ФИРМЫ

Kingbright

СИСТЕМА ОБОЗНАЧЕНИЙ

ТВ А 20 - 11 GWA
1 2 3 4

4. ЦВЕТ СВЕЧЕНИЯ И ЯРКОСТЬ

H - красный
E - оранжевый
G - зеленый
Y - желтый
SR - красный суперяркий
SG - зеленый суперяркий

1. ТИП

T - один цвет
ТВ - два цвета

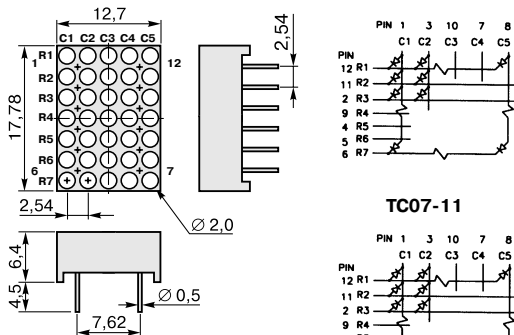
2. ПОДКЛЮЧЕНИЕ

A - аноды в столбце соединены
C - катоды в столбце соединены

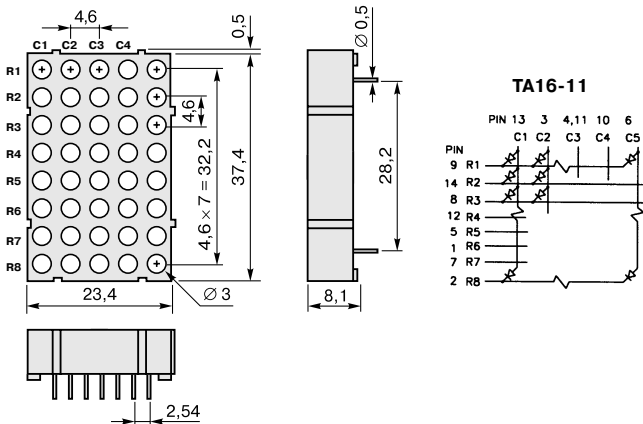
3. РАЗМЕР ЗНАКА

Размер знака в дюймах
или долях дюйма

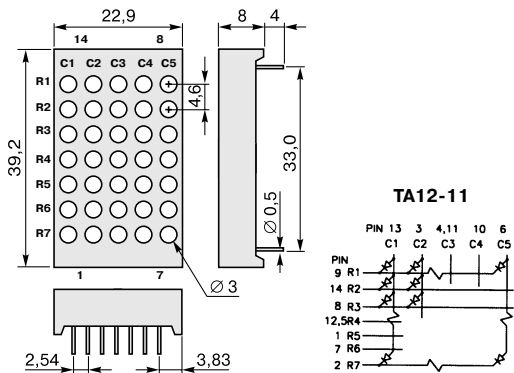
TA07/TC07



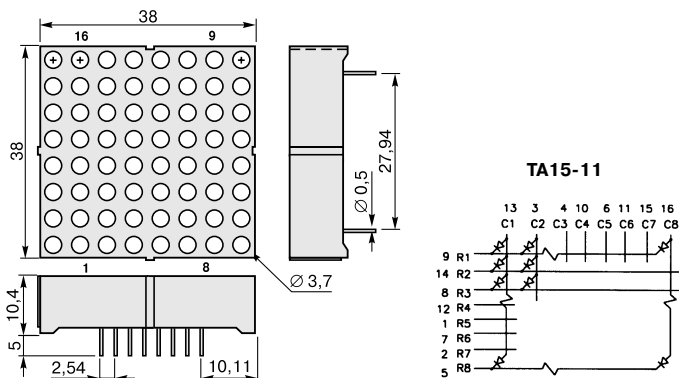
TA/TC16



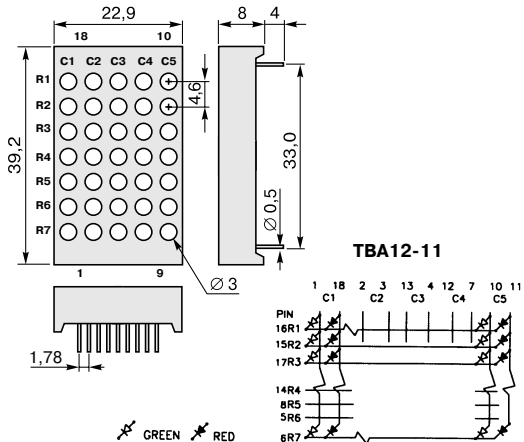
TA/TC12-11



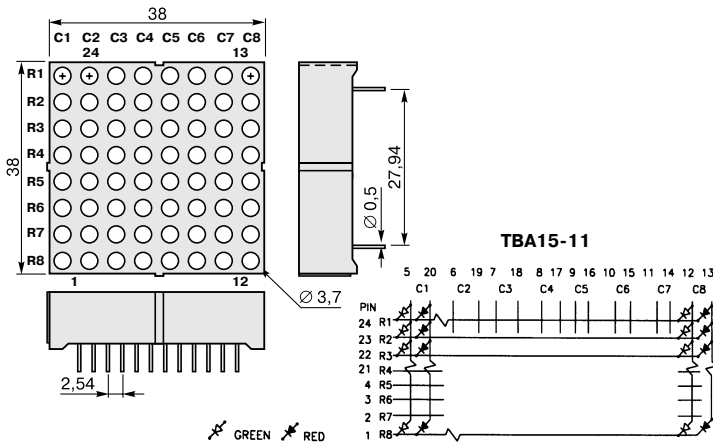
TA/TC15-11



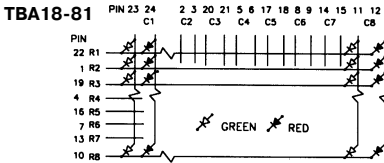
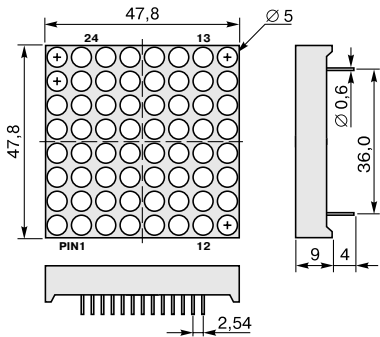
TBA/TBC12-11



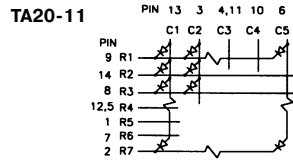
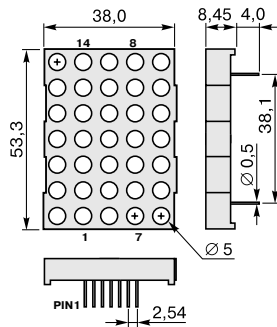
TBA/TBC15-11



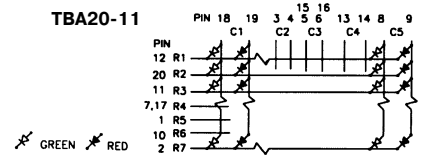
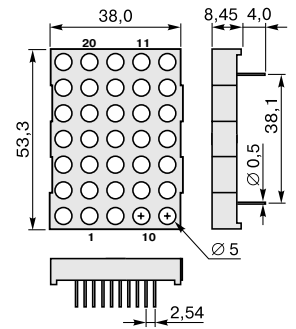
TBA/TBC18-81



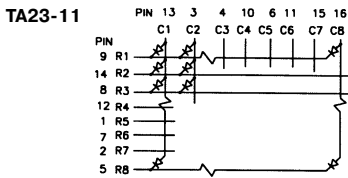
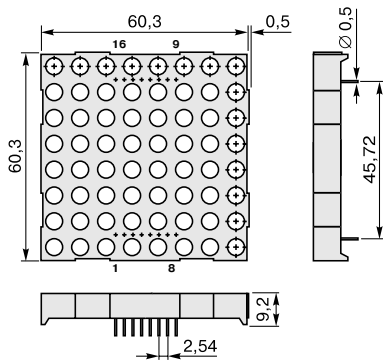
TA/TC20-11



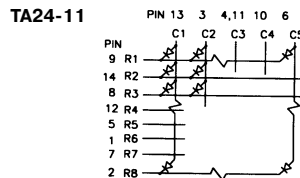
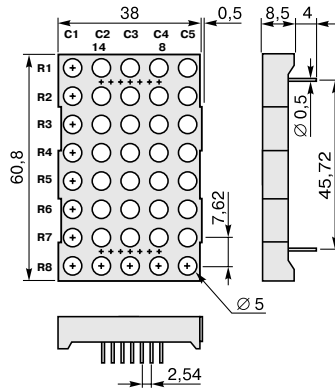
TBA/TBC20-11



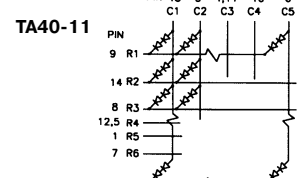
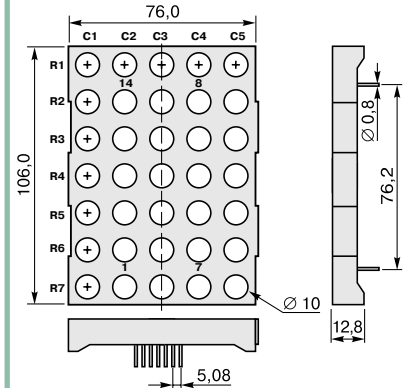
TA/TC23-11



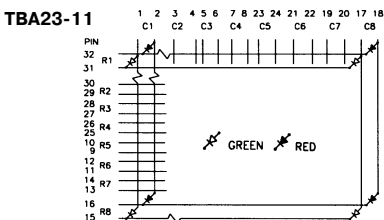
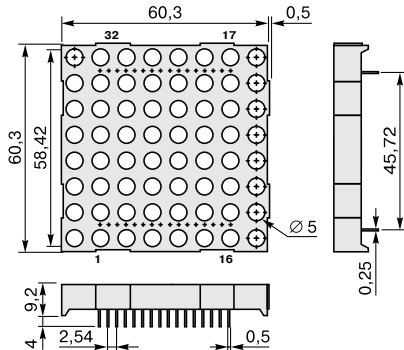
TA/TC24-11



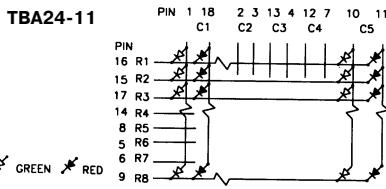
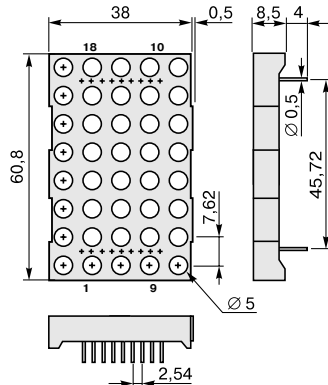
TA/TC40-11



TBA/TBC23-11



TBA/TBC24-11



TBA/TBC40-11

